

***Let's Make A Plan!***  
***Taking Action***  
***(How Do I Get Started on My Property?)***

North Shore Forest Collaborative (NSFC)

Landowner Workshop

Wolf Ridge Environmental Learning Center

Finland, MN 2014

Will Bomier

District Conservationist

MN-NRCS; Duluth

# Why Do I Need A Plan?

## A Roadmap To Taking Action

- Outline Your Objectives
- Identify Resource Concerns/Opportunities
  - A Chance To Walk Your Property With A Resource Professional
- Create a Record of Your Decisions and Implementation.
- Address Regional and Landscape Conservation Goals (How Can We Restore and Create a More Resilient Forest Ecosystem Along the North Shore).
- Apply For Programs/Funding Opportunities to Implement Identified Practices.

Plans convey:

What

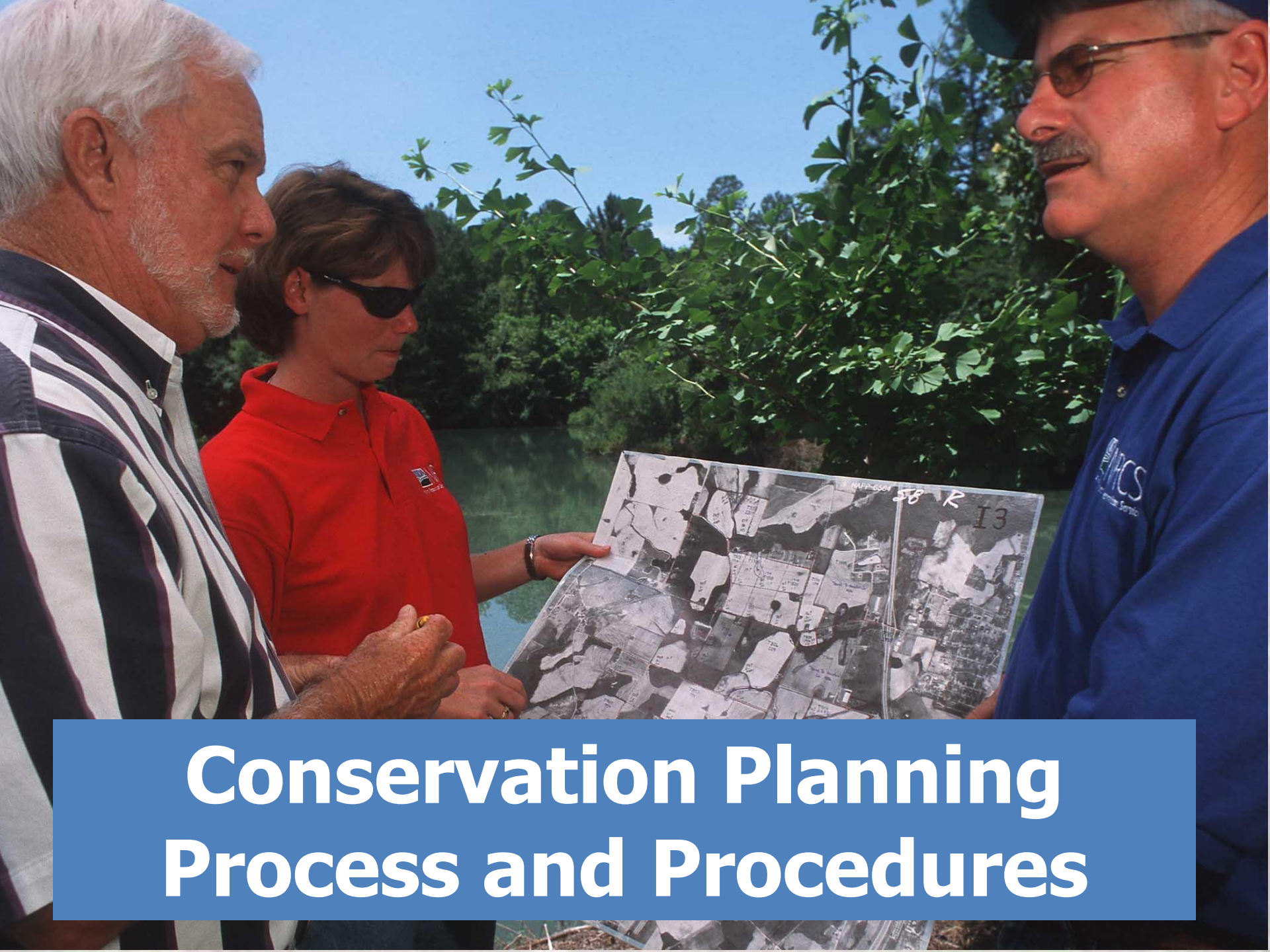
Where

When

How

How much

- Can Help You Take And Apply Some of The Ideas You Heard About Here Today

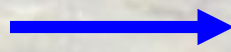


# Conservation Planning Process and Procedures

# The Planning Process

Conservation Plans

1. Identify Problems and Opportunities
2. Determine Objectives
3. Inventory Resources
4. Analyze Resource Data
5. Formulate Alternatives
6. Evaluate Alternatives
7. Make Decisions
8. Implement the Plan
9. Evaluate the Plan



Documented in  
Conservation Plan

# What's Involved With A Plan?

- A Site Visit with A Resource Professional
- Resource Assessment of Your Property

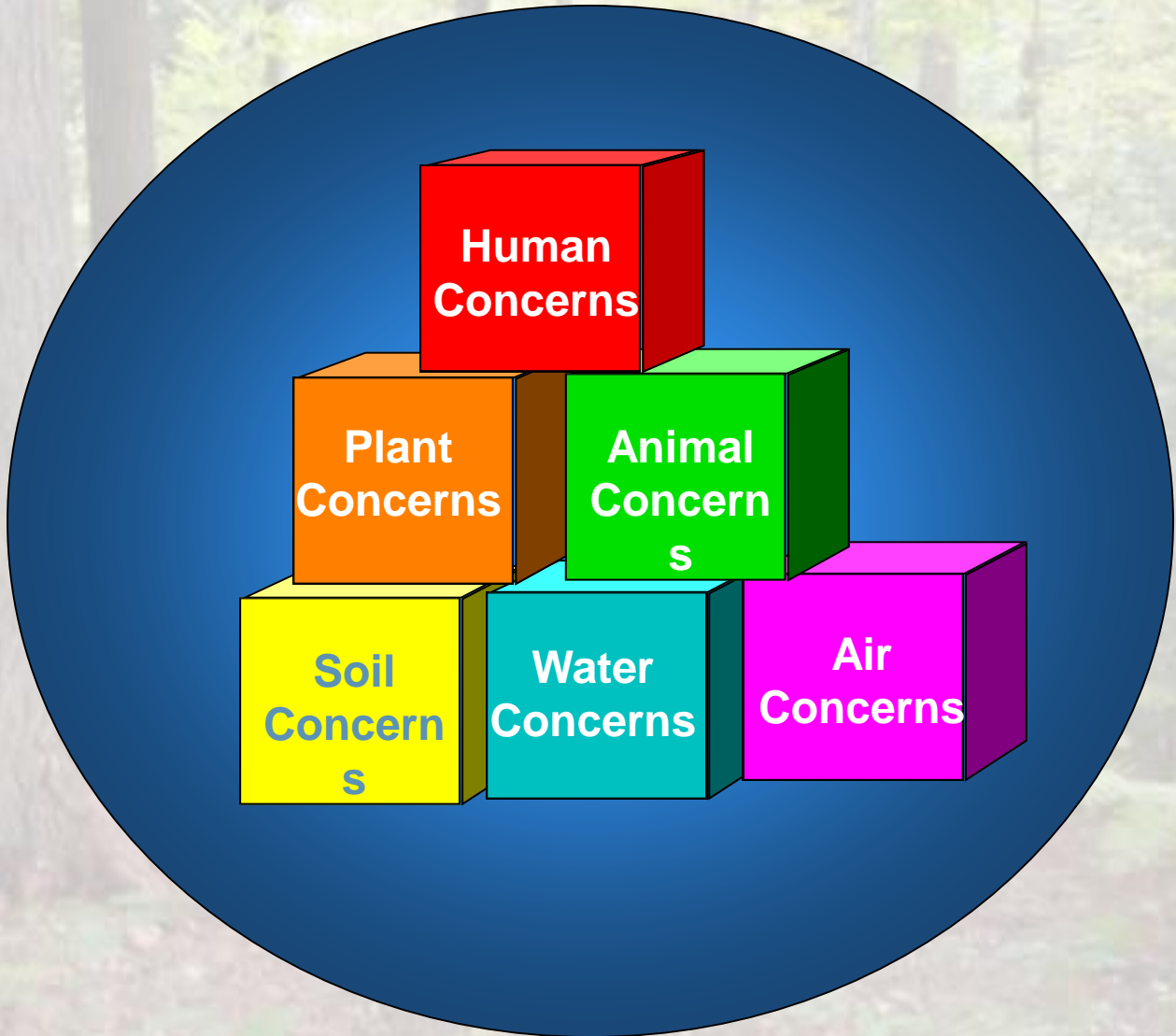
Based On That Visit The Plan Writer Will Develop The Plan That Will Include:

- Recommendations and Alternatives for Conservation Practices that Could Be Implemented on your Land (now and in the future).
- Descriptions and Maps that include details on:
  - Soils and Locations of Property Features and Planned Practices
  - Unique Cultural and Natural Features
  - Instructions on How To Install Conservation Practices
  - Cost-Estimates
  - Schedule for Implementation on Selected Practices

# Forest Natural Resources Improvement and Protection

For each resource element, consider:

- *What treatments/monitoring/protection are planned?*
- *When will you implement treatments (season, year), follow-up activities, etc?*
- *Where will the management take place: entire stand, part of a stand, acres?*
- *Do you have applicable permits, professional assistance, and applications for the incentive programs?*
- *What level of O&M will be needed and how will this be accomplished?*



**Human  
Concerns**

**Plant  
Concerns**

**Animal  
Concerns**

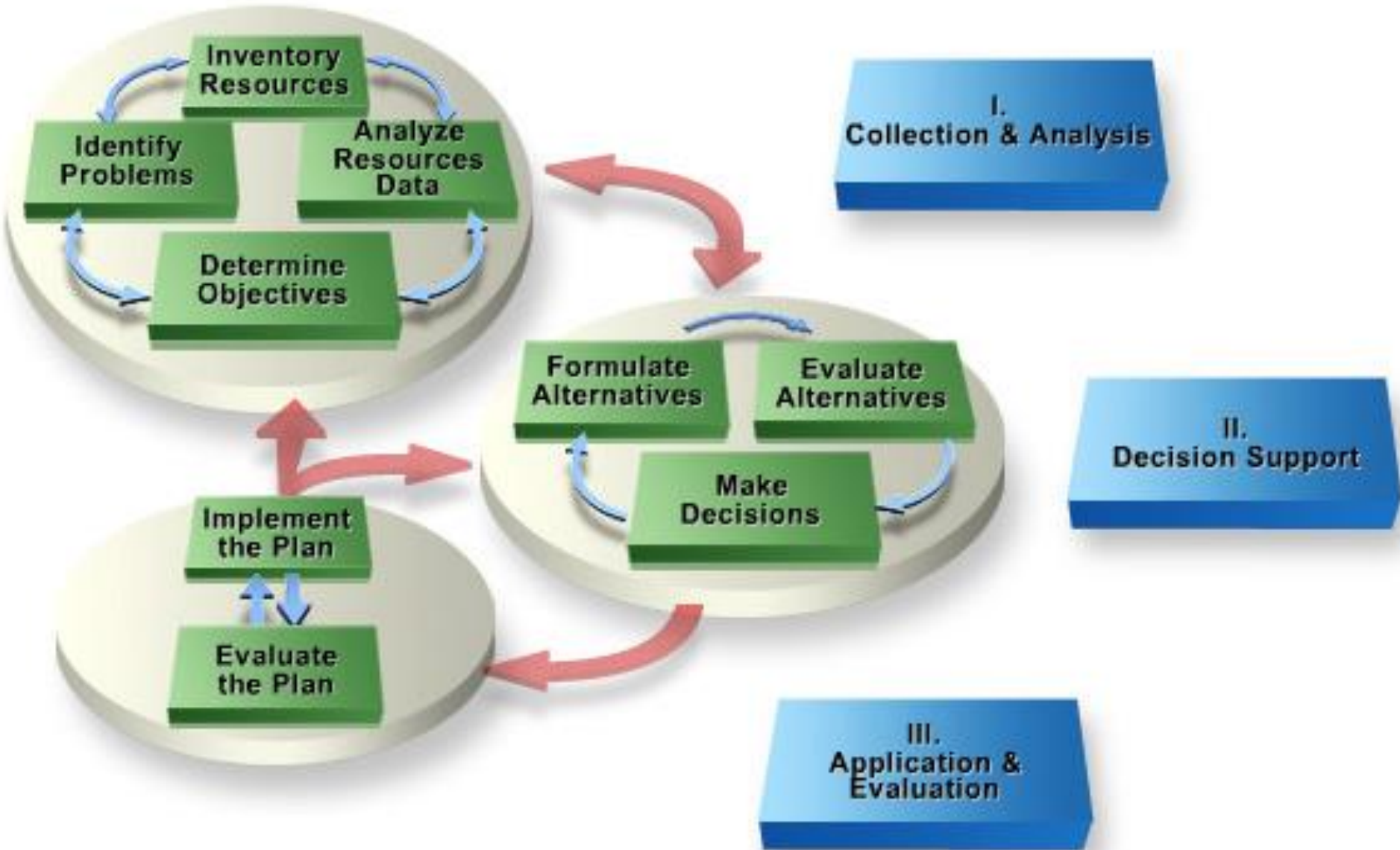
**Soil  
Concerns**

**Water  
Concerns**

**Air  
Concerns**



# NRCS Conservation Planning Process

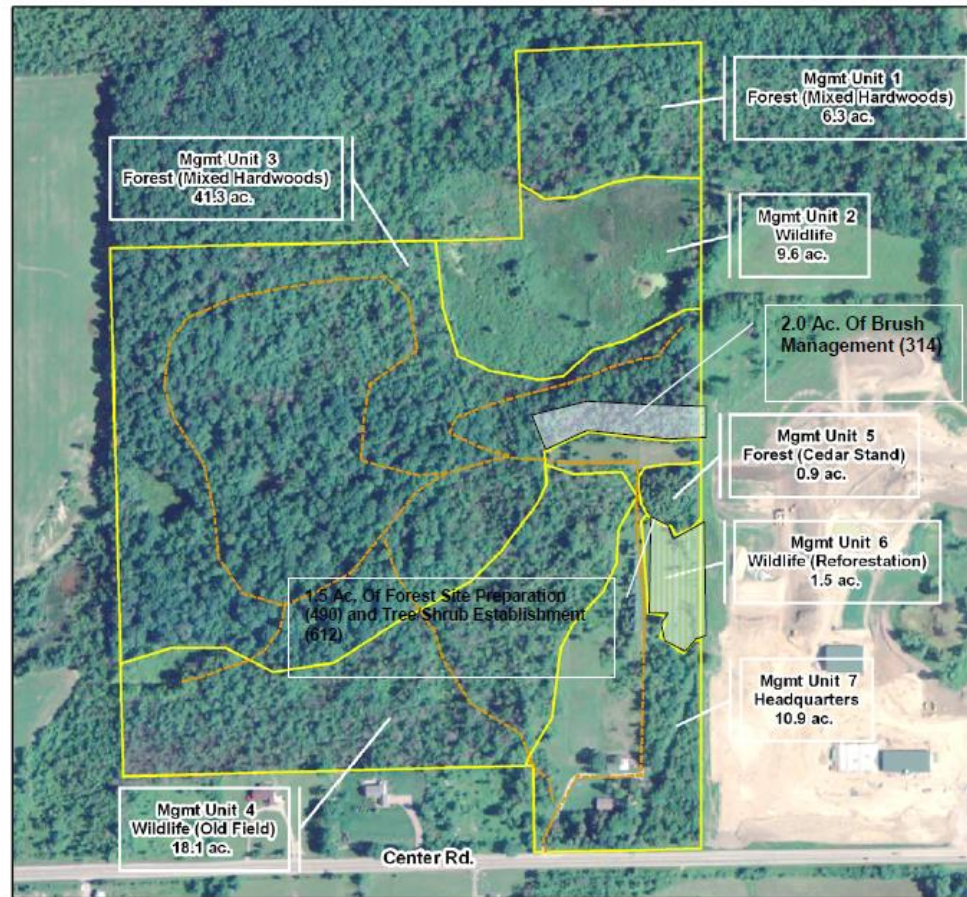


# Joseph K. Landowner Plan Map

Date: 12/21/2009

Approximate Acres: 88.6  
Part of the SE 1/4 of Sec 12, T0N, R0E (Maplewood Twp., Northwoods Co., MI)

Assisted By: John Forester



### Legend

- Trails (Line)
- Joseph K. Landowner Land Units

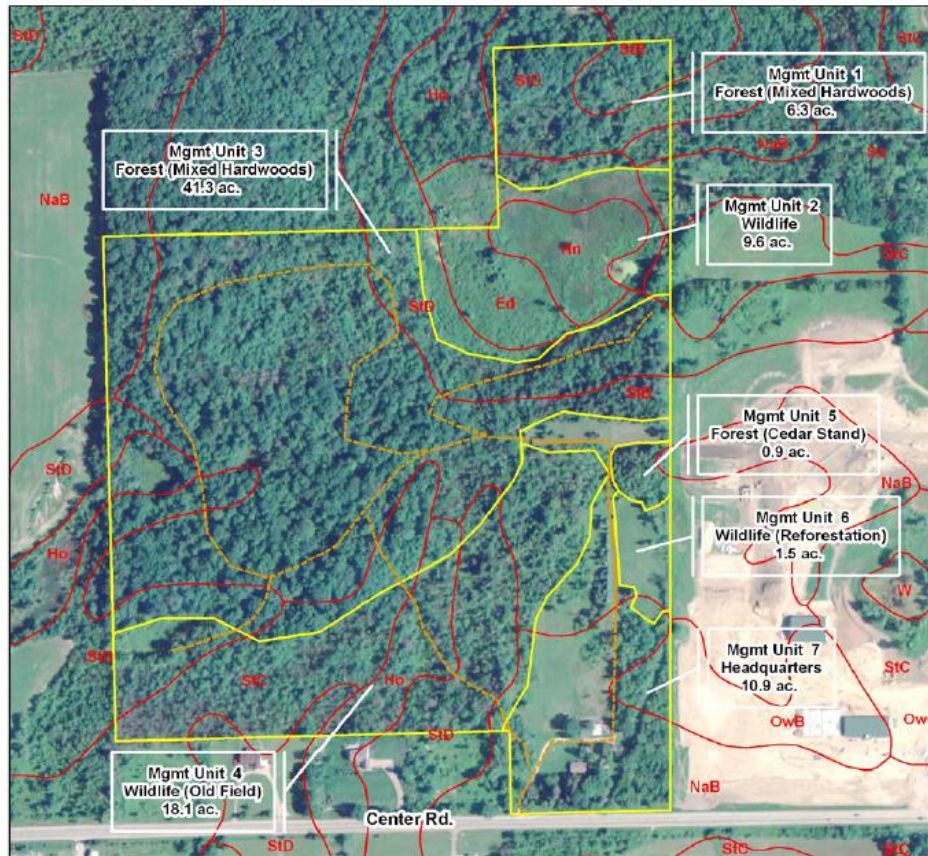


# Joseph K. Landowner Soils Map

Date: 12/21/2009

Approximate Acres: 88.6  
Part of the SE 1/4 of Sec 12, T0N, R0E (Maplewood Twp., Northwoods Co., MI)

Assisted By: John Forester



### Legend

- Trails (Line)
- Joseph K. Landowner Land Units
- Soil (refer to Appendix A for soils information)





Landowner: Joe K. Landowner

**Definition**

Wildlife tree/shrub planting is establishing and maintaining tree and shrub cover to protect soil and water resources on land retired from agricultural production and provide for wildlife benefits and provide protection from wind and manage snow deposition.



**Purpose**

Tree/shrub planting is used to protect soil resources, control snow deposition, prevent wind damage to farmsteads, provide shelter for livestock, conserve heating and cooling energy, beautify the area, or improve an area for wildlife.

**Wildlife**

This practice is well suited to provide quality wildlife habitat. Tree species selected for planting will affect what type of wildlife that will benefit from these acres. Supplementing the tree plantings with other wildlife practices, plantings or seeding will further enhance the cover.



**Planning Considerations**

Planting trees and shrubs has the potential of adversely affecting non-target species. Careful consideration is to be given when planting trees and shrubs in the historic prairie region of the state. Refer to practice standard 612- Tree/Shrub Planting native trees and shrubs recommended by ecoregion.

- Establish dense tree and shrub block, clump or under-plantings as appropriate.
- Optimal plantings are 2-5 acres in size, 10-16 rows (150-200' total width), and have a minimum 4 rows of conifers planted on the down wind side.
- A standard 10 row block planting will consist of 2 rows of shrubs planted on the windward side of the planting. Preferably the shrubs will be planted 30-50' feet upwind of the rest of the planting to serve as a snow catch. The next 4 rows will consist of tall deciduous trees, and the inner 4 rows will consist of conifers. If space is available, expand the 10 row planting as follows:

ADDITIONAL ROWS	TREE / SHRUB
1,2	Conifer
3-5	2 Conifers, 1-3 Shrubs
6	2 Conifers, 1 Medium tree, 3 Shrubs

**Spacing Between Rows:**

Row Types/Heights	Minimum Row-to-Row Spacing
Between shrubs less than 10' in height	10 ft.
Between shrubs and small trees from 10' to 25' in height	12 ft.
Between small trees less than 25' in height	12 ft.
Between small and tall trees greater than 25' in height	16 ft.
Between tall trees greater than 25' in height	16 ft.
Between any wide crowned species and conifers	20 ft.
Between faster growing species and conifers	20 ft.

# What Is My Obligation?

- Getting A Management Plan Does Not Mean That You're Required To Implement Any of The Suggested Practices.
- However.....
  - We Certainly Hope that More Planning Will Lead to More Practice Implementation....

The Goal Is To Encourage/Help People To Adopt Some of The Ideas/Topics That Are Being Discussed Here Today.

# What Types of Plans Are Available?

- **NRCS Conservation Plans**
  - No Cost To The Landowner
- **Forest Stewardship Plans**
  - Usually Developed By Consulting Foresters or MN-DNR Foresters for a Fee
- **Forest Conservation Activity Plans**
  - (Available Through NRCS and Very Similar to Stewardship Plans)
  - Plans Are Completed By A Private Consulting Forester That Is Hired By the Landowner
  - Funds Are Available That In Most Cases Will Cover the Cost of The Plan

# Common NRCS Agroforestry and Forestry Practices

Practice Name	Code
Access Control (ac)	472
Alley Cropping (ac)	311
Brush Management (ac)	314
Early Successional Habitat Development/Management (ac)	647
Firebreak (ft)	394
Forest Slash Treatment (ac)	384
Forest Stand Improvement (ac)	666
Forest Trails and Landings (ac)	655
Fuel Break (ac)	383
Multi-Story Cropping (ac)	379
Prescribed Burning (ac)	338

Practice Name	Code
Restoration and Management of Rare or Declining Habitats (ac.)	643
Riparian Forest Buffer (ac)	391
Road/Trail/Landing Closure & Treatment (ft)	654
Silvopasture Establishment (ac)	381
Tree/Shrub Establishment (ac)	612
Tree/Shrub Site Preparation (ac)	490
Tree/Shrub Pruning (ac)	660
Upland Wildlife Habitat Management (ac)	645
Windbreak/Shelterbelt Establishment (ft)	380
Windbreak/Shelterbelt Renovation (ft)	650

# Plan Implementation

- Once The Plan Is Completed There Are Programs Available That Can Provide Financial Assistance To Help You Start The Implementation Process.
- Talk To Your Resource Professional About Programs Available During Your Site Visit.



# How Do I Get Started?

- Will Bomier, (District Conservationist) Natural Resources Conservation Service (NRCS) 218-720-5209 Ext. 3
- Matt Tyler (Consulting Forester) 218-226-8659
- Roger Nelson, (Private Forest Management Forester), MN DNR 218-744-7454 x2230
- Your Local Soil And Water Conservation District
  - Lake County 218-834-8370
  - Cook County 218-387-3647