

Sugarloaf: The North Shore Stewardship Association



Molly Thompson, Executive Director
molly@sugarloafnorthshore.org

History of Sugarloaf

From 1941 – 1971 Consolidated Papers, Inc. used Sugarloaf Cove as a pulpwood landing area



1992 – SICCA was founded
2000 – Interpretive Center built



In 2004 SICA became:

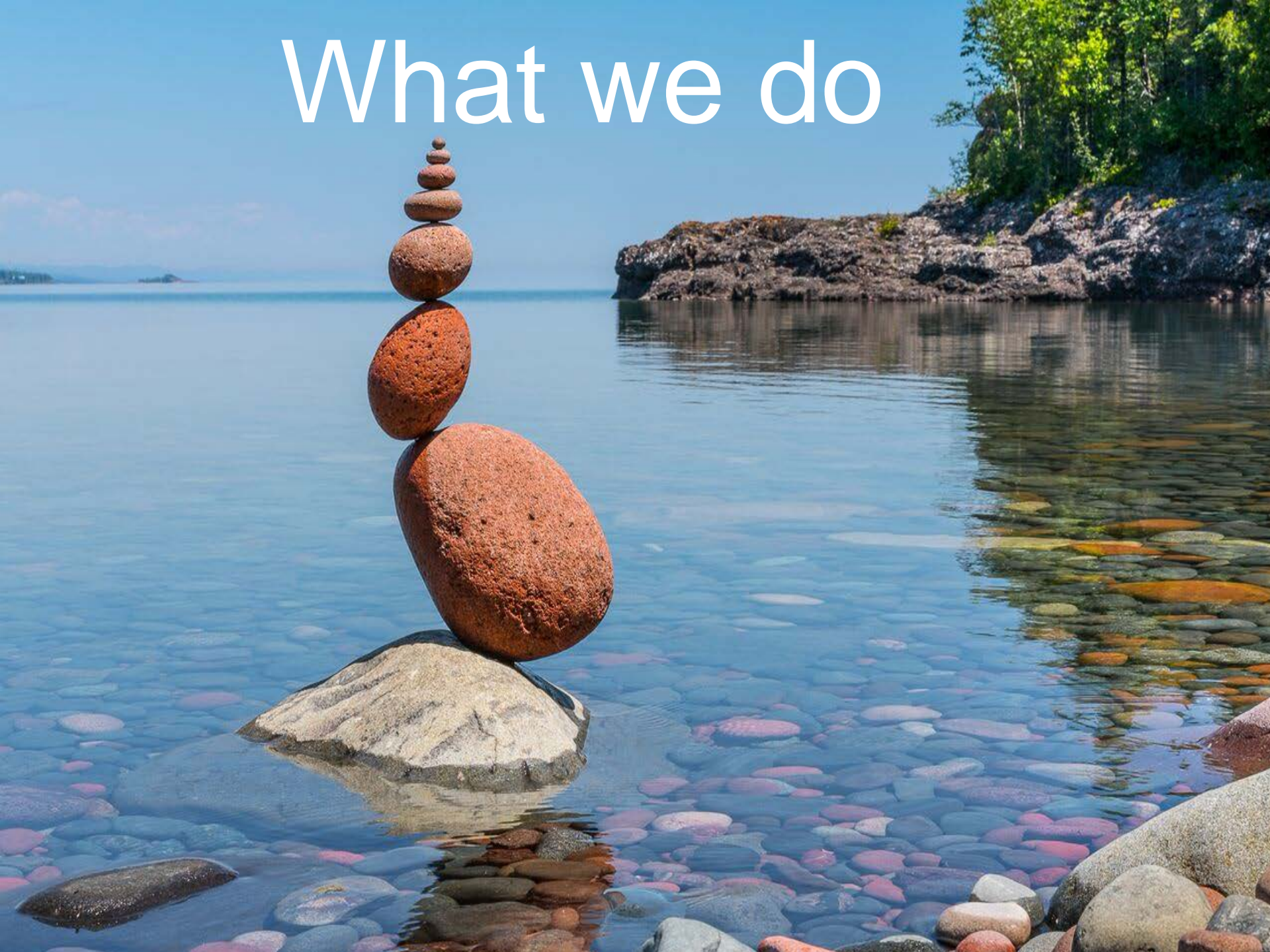
Sugarloaf: The North Shore Stewardship Association

A 501c3 Non Profit Organization

Mission:

To inspire the preservation and restoration of the North Shore's unique environment through education and exemplary stewardship, especially at Sugarloaf Cove.

What we do



Educational Programs



Bird Banding demonstrations

Geology Walks



Guest Speakers



Master Naturalist Training



- 6 classes at Sugarloaf
- 100 participants

- 2 classes at North House
- 34 participants



North Shore Forest Stewardship: Expanding our Reach

The Lost Forest

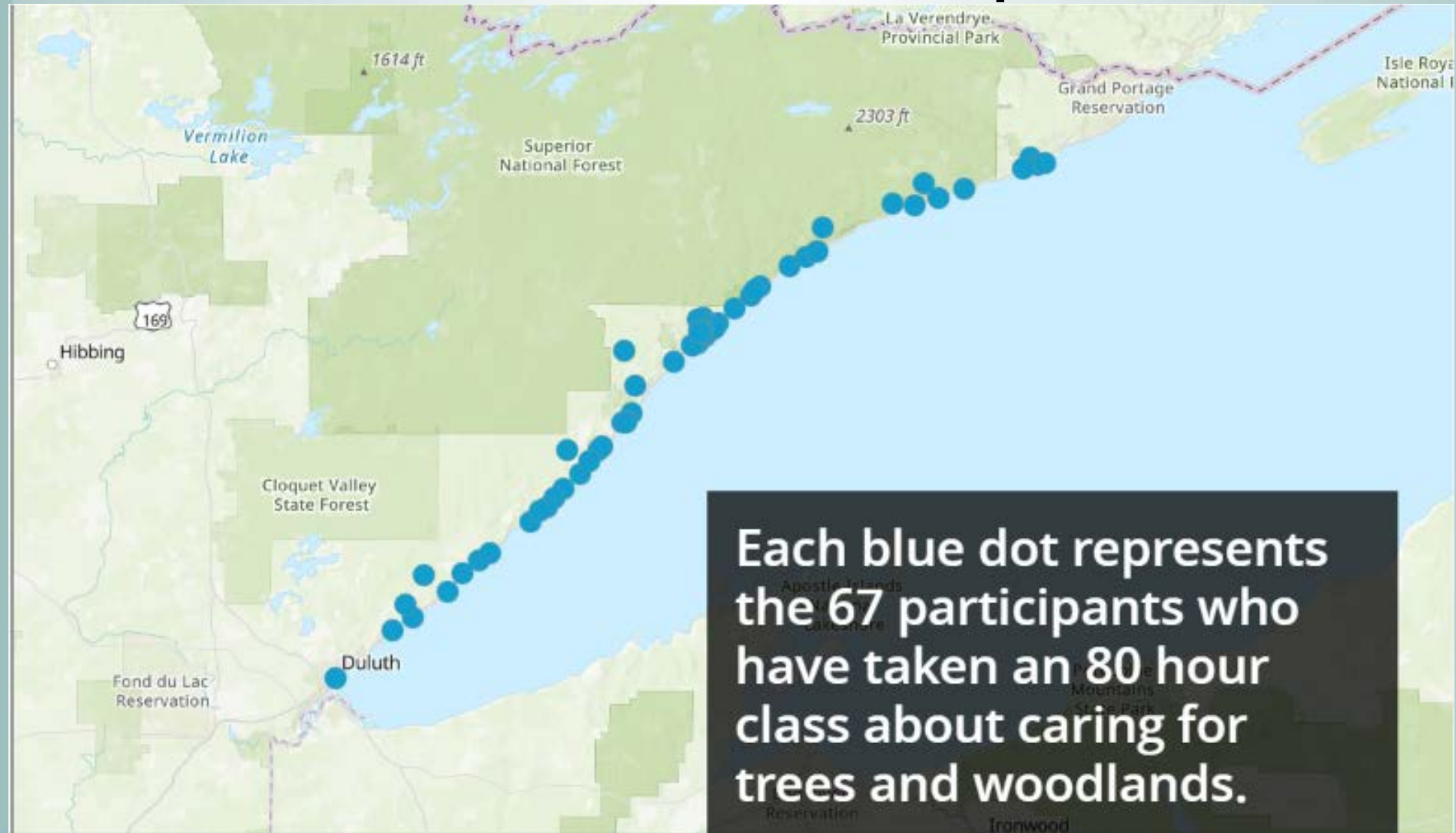
2005-2006, 2010-2011, 2015, 2017-2018

- Partnership with U of MN Extension
- 67 participants in four cohorts
- Invasive species control and tree planting efforts undertaken
- Over 2000 acres affected



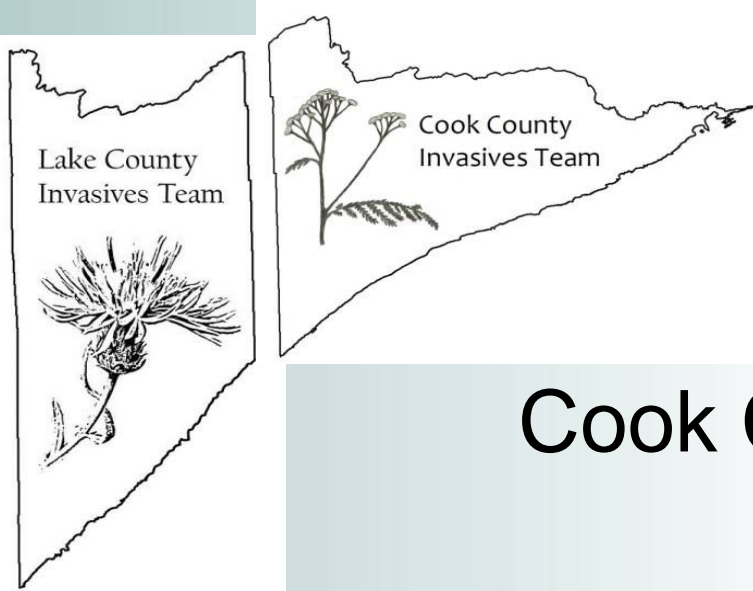
Photo by Michael Reichenbach

Lost Forest Participants



Each blue dot represents the 67 participants who have taken an 80 hour class about caring for trees and woodlands.

Invasives Teams



Cook County Invasives Team
+
Lake County Invasives Team



Arrowhead Invasives Team

Community Shed



Low Cost Fencing Program 2016-2019

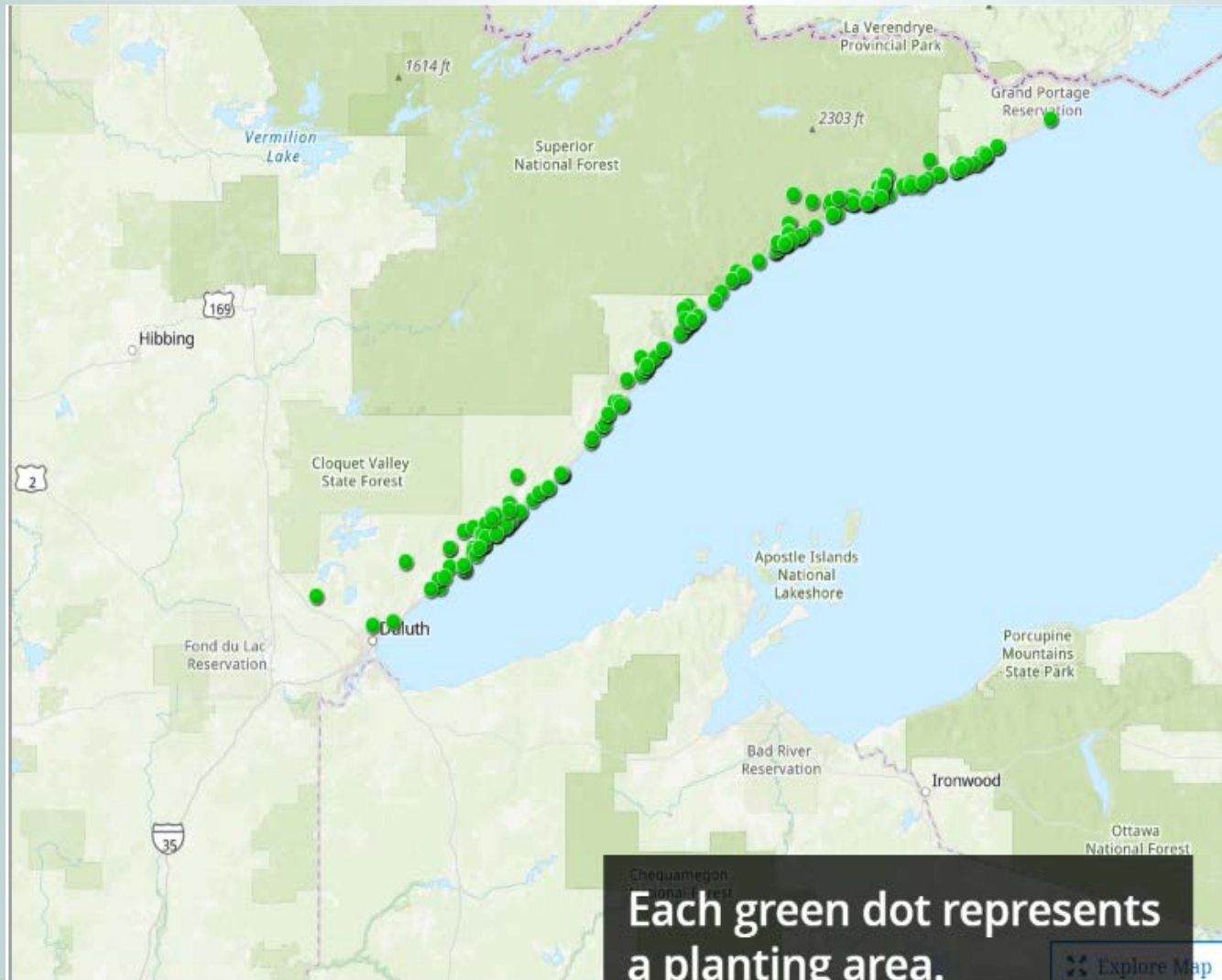


367 participants
1783 rolls of
fence

9,979 trees
planted & fenced

41,579 total trees
planted!

Fencing participants 2016-2018



N2N and CPL grant



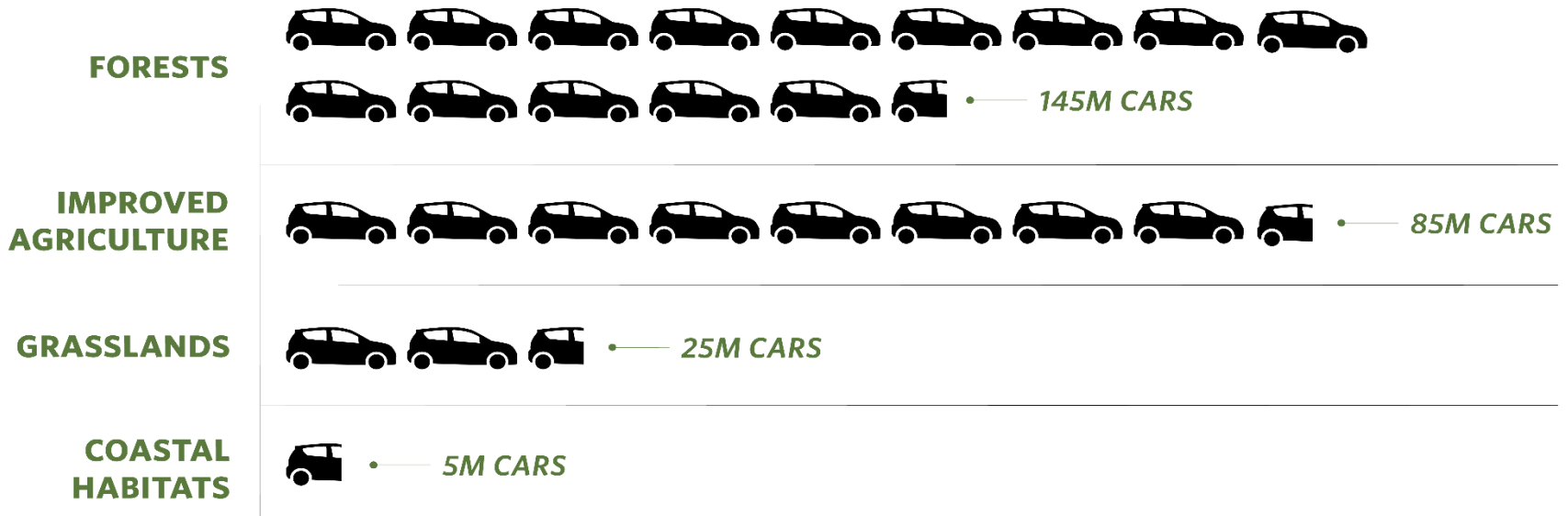
N2N
Grant funded
project in
partnership with
MN Extension
and the NSFC

CPL
3 - year,
\$267,000 grant
for restoration
at Sugarloaf
Cove and on
State and
Federal lands.

Natural Climate Solutions

NATURAL CLIMATE SOLUTIONS

In the U.S., nature has potential to remove **21% of the nation's carbon pollution**—equivalent to removing emissions from **ALL cars and trucks on the road...and then some.**




U.S. Mitigation Potential: Approximate Number of Cars Removed Each Year in Millions

 = 10M cars

In Louisiana's Tensas River Basin landowners are already receiving carbon credit payments for reforesting their lands.

Funds are from Delta passengers who choose the carbon-neutral option.

Another project receives funds from REI.



Thank You For Your Support!
Visit us at Sugarloafnorthshore.org